



Research Article

Sustainable Waste-to-Energy (WTE) Pathways: Integrating Hybrid Technologies for Climate-Resilient Urban Development in South Asia

Helal Uddin¹ , Rasel Ahmed² , Zaryab Basharat³ , Manfred Obeng Amoh⁴ , Touhidur Rahman Sajib⁵ and Syed Anaitullah Bukharie⁶

¹Department of Mechanical Engineering, Hajee Mohammad Danesh Science and Technology University, Dinajpur, Bangladesh

²Department of Mechanical Engineering, Rajshahi University of Engineering & Technology, Rajshahi, Bangladesh

³MOE Key Laboratory of Thermo-Fluid Science and Engineering, Xi'an Jiaotong University, China

⁴Department of Health Sciences, University of East Anglia, Norwich, England

⁵Department of Management, Multimedia University, Selangor, Malaysia

⁶Department of Statistics, University of Kashmir, Srinagar, India

Article Information

Article History

Received: 8 March 2026

Revised: 2 April 2026

Accepted: 25 April 2026

Published online: 5 May 2026

Keywords

Waste-to-Energy

Climate Resilience

Municipal Solid Waste

Circular Economy

Decentralized Systems

Correspondence*

mohammadhela247@gmail.com

ORCID

Helal Uddin

<https://orcid.org/0009-0008-2765-8140>

Rasel Ahmed

<https://orcid.org/0000-0002-4633-6699>

Zaryab Basharat

<https://orcid.org/0009-0008-1914-3331>

Manfred Obeng Amoh

<https://orcid.org/0009-0001-7610-301X>

Touhidur Rahman Sajib

<https://orcid.org/0009-0002-7675-3335>

Syed Anaitullah Bukharie

<https://orcid.org/0009-0009-0637-6678>

Abstract

Rapid urbanization in South Asia has significantly increased municipal solid waste (MSW) generation, intensifying infrastructure and environmental health challenges. Open dumping remains a common waste management practice, but it contributes to climate change through methane emissions, while large-scale empirical research on sustainable solutions for vulnerable megacities remains limited. This study assesses the technical, environmental, and economic feasibility of waste-to-energy (WTE) systems to enhance urban climate resilience and circular resource use. The analytical framework integrates life cycle assessment (LCA) and techno-economic analysis of incineration, anaerobic digestion, gasification, and pyrolysis. Performance indices for selected South Asian cities were evaluated using multi-criteria decision-making models. MSW generation was estimated at 0.5-0.8 kg/capita/day, with organic fractions of around 50-65%. Hybrid systems achieved the highest performance scores, reducing landfill dependence by 60-80% and carbon emissions by 30-50%. Decentralized designs showed shorter payback periods of 5-8 years compared with 8-12 years for centralized systems. The paper concludes that decentralized hybrid WTE technologies offer a transformative and scalable pathway to sustainable urban growth and climate adaptation in South Asia.

© 2026 Centre for Research and Innovation (CRI). This is an open access article under the CC BY-NC-ND license (<http://creativecommons.org/licenses/by-nc-nd/4.0/>).

I. INTRODUCTION

The rapid growth of urban populations and industrial activities has led to a significant increase in municipal solid waste (MSW) generation worldwide, particularly in developing countries. Inefficient waste management practices such as open dumping and uncontrolled landfilling

have resulted in severe environmental pollution, greenhouse gas emissions, and public health risks [8], [24]. These challenges necessitate the adoption of sustainable and integrated waste management approaches that not only reduce environmental impacts but also recover value from waste streams. Waste-to-energy (WTE) technologies have

emerged as a promising solution for addressing both waste management and energy shortages. These technologies convert waste materials into useful energy forms such as electricity, heat, and biofuels through processes including incineration, anaerobic digestion, gasification, and pyrolysis [6], [12], [21]. Studies have shown that biodegradable municipal waste holds significant potential for energy generation, contributing to renewable energy production and reducing dependency on fossil fuels [9], [22]. Additionally, advancements in biochar-assisted digestion and adsorption technologies have enhanced the efficiency of waste treatment and resource recovery processes [27], [29].

The integration of WTE systems within the broader framework of circular economy and sustainable resource management has gained increasing attention. Artificial intelligence (AI)-driven smart waste management systems can optimize resource recovery, improve operational efficiency, and enhance climate resilience in urban environments [1]. Furthermore, nexus-based approaches such as water-soil-waste (WSW) and water-energy-food (WEF) emphasize the interconnectedness of resource systems and their collective role in achieving sustainable development goals (SDGs) [4], [5].

Green microbiology and bio-based technologies also contribute to sustainable waste valorization and environmental protection [14]. In addition to technological advancements, governance and socio-economic factors play a crucial role in the successful implementation of waste management systems. Cooperative environmental governance frameworks improve coordination among stakeholders and enhance service delivery in urban regions [2].

Public participation and willingness to pay for improved waste management services significantly influence the adoption and sustainability of advanced technologies [7]. Moreover, policy directives, regulatory frameworks, and collaboration between public and private sectors are essential for driving sustainable transitions in the energy and waste sectors [23], [28].

Waste-to-energy systems also contribute to broader decarbonization efforts across multiple sectors. Waste-derived biofuels have the potential to reduce emissions in transportation and logistics, supporting low-carbon development pathways [20]. Emerging technologies such as electro fuels, natural gas alternatives, and cleaner energy systems further enhance the transition toward sustainable energy futures [15], [16], [25].

Additionally, the valorization of industrial residues and carbon capture techniques can significantly reduce greenhouse gas emissions and improve environmental sustainability [18], [26]. Despite these benefits, several challenges hinder the large-scale implementation of WTE technologies. High capital costs limited technical expertise, inadequate infrastructure, and policy constraints remain significant barriers, particularly in developing countries [11], [21].

Furthermore, issues related to environmental risks, such as hazardous waste residues and contamination, require careful management and technological innovation [17], [24]. Regional disparities in waste management practices and energy efficiency, especially in Asia and the Pacific, highlight the need for context-specific solutions and improved system integration [19], [30].

Recent research also emphasizes the importance of techno-economic assessments, lifecycle analysis, and system optimization to ensure the sustainability and feasibility of WTE projects [6], [13], [21]. The integration of waste management with energy systems, transportation, and industrial processes can create synergistic benefits, contributing to a more resilient and circular economy [10], [20]. However, there remains a lack of large-scale empirical studies and real-world implementation cases, particularly in vulnerable megacities where waste generation is rapidly increasing [1], [3].

Therefore, this study aims to explore sustainable waste-to-energy solutions by integrating technological innovations, environmental considerations, and governance frameworks. The research focuses on enhancing circular resource management, improving energy recovery efficiency, and supporting climate-resilient urban development in the context of emerging economies.

This study is novel because it provides an integrated techno-enviro-economic evaluation specifically focused on vulnerable South Asian megacities and addresses a critical gap in large-scale empirical research in this area. Unlike traditional waste management literature, the paper develops a unique performance index centered on climate-resilient urban resilience to validate a decentralized hybrid waste-to-energy model. The model combines anaerobic digestion and thermal conversion to manage the high-moisture organic waste typical of monsoon-influenced urban areas at lower cost. This strategy offers a practical circular economy framework for energy recovery and scalable implementation in high-density communities exposed to climatic stresses such as floods and heat.

TABLE I PREVIOUS WORK CONDUCTED ON SUSTAINABLE WASTE-TO-ENERGY (WTE) PATHWAYS: INTEGRATING HYBRID TECHNOLOGIES FOR CLIMATE RESILIENT URBAN DEVELOPMENT IN SOUTH ASIA

Ref	Aim	Method	Results	Research Gap
[23]	Analyze policy frameworks guiding sustainable energy sector development	Policy analysis of directives and regulatory frameworks implementation	Improved compliance rates increased renewable adoption by 25%	Lack regional adaptation strategies for developing countries contexts
[24]	Evaluate automotive shredder residue contribution to PFAS contamination	Laboratory analysis and waste stream contamination assessment methods	PFAS levels increased contamination risk by 40% observed	Limited mitigation strategies for PFAS removal in wastes
[25]	Examine cleaner energy systems for sustainable future development pathways	Comparative analysis of renewable technologies and system efficiencies	Energy efficiency improved approximately 30% across systems studied	Lack integration framework for developing nations' energy systems
[26]	Assess flare gas valorization for sustainable fuel production systems	Techno-economic analysis and lifecycle emissions evaluation approach applied	Emissions reduced by 35% and fuel production increased	Limited scalability assessment in developing regions infrastructure constraints
[27]	Investigate biochar adsorption for heavy metal removal efficiency	Experimental adsorption studies with modeling and characterization techniques	Removal efficiency reached 90% for heavy metals ions	Lack large-scale application validation under real environmental conditions
[28]	Analyze regulatory-private sector collaboration for shipping decarbonization strategies	Qualitative policy review and stakeholder collaboration assessment framework	Emissions reduction potential estimated at 20% through cooperation	Lack quantitative validation models for policy effectiveness measurement
[29]	Evaluate biochar effects on anaerobic co-digestion performance enhancement	Experimental digestion tests under controlled mesophilic operating conditions	Biogas yield increased by 25% with biochar addition	Limited long-term stability studies for continuous system operations
[30]	Assess regional biogas utilization opportunities for sustainable energy production	Case study analysis with regional resource and feasibility assessment	Energy generation potential increased by 30% regionally estimated	Lack economic feasibility analysis for large scale implementations
[31]	Review waste management and waste-to-energy policy frameworks globally	Technical review and policy document synthesis across countries	Waste reduction achieved up to 50% using WTE technologies	Limited focus on developing nations infrastructure and financing
[32]	Examine household willingness to pay for advanced waste services	Survey-based quantitative analysis and econometric modeling applied	Willingness increased by 18% with improved service quality	Lack behavioral studies linking awareness and payment willingness
[33]	Develop AI-driven waste-to-energy systems for climate resilience applications	Machine learning models integrated with smart waste management systems	Efficiency improved by 35% using AI-based optimization methods	Lack real-world implementation validation in megacity environments
[34]	Compare natural gas vehicles performance during global energy transition	Comparative review of vehicle technologies and emission performance	Emissions reduced by 20% compared to conventional vehicles	Limited integration with renewable energy-based transport systems

II. METHODOLOGY

The study employs a comprehensive analytical framework to assess the feasibility and effectiveness of Waste-to-Energy (WTE) technologies in boosting urban climate resilience in South Asia. This methodology integrates data-driven analysis, life cycle assessment, and techno-economic evaluation to provide a thorough understanding of system performance within real urban contexts. It is structured to address the intricate relationships among waste generation patterns, technology efficiency, environmental impacts, and socio-economic viability. The framework is organized into six interconnected components to ensure a systematic and rigorous evaluation of WTE systems.

A. Study Area and Data Collection

The research targets key urban areas in South Asia experiencing rapid population growth and accelerated urbanization, which has led to a substantial increase in municipal solid waste (MSW) generation. Secondary data were collected from published reports, municipal records, government databases, and existing literature sources. The collected dataset includes waste generation rates, waste composition, moisture content, and calorific values to ensure a comprehensive characterization of MSW streams. The average waste generation rate considered in this study ranges from 0.5 to 0.8 kg per capita per day. Special emphasis was placed on organic waste fractions, which account for approximately 50–65% of total MSW, due to their high

suitability for biological treatment processes such as anaerobic digestion and composting. This dataset forms the foundational input for evaluating Waste-to-Energy (WTE)

potential and system efficiency in urban South Asian contexts.

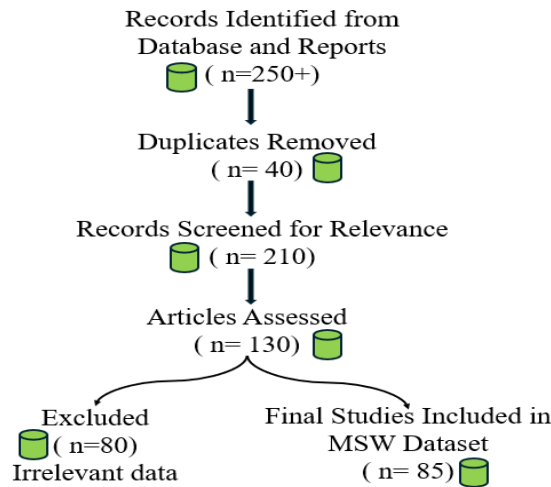


Fig.1 PRISMA Flow Diagram Of Data Collection and Selection Process for MSW Dataset in South Asian Urban Areas

TABLE II COMPOSITION AND CALORIFIC VALUE OF MUNICIPAL SOLID WASTE

Waste Component	Composition (%)	Moisture Content (%)	Calorific Value (kcal/kg)
Organic Waste (Food, Yard)	50–65	60–75	800–1500
Paper & Cardboard	8–12	5–10	2500–3500
Plastics	10–15	1–3	4000–7000
Textiles	2–5	10–20	3000–4500
Wood	1–3	15–25	2500–4000
Glass & Ceramics	2–4	0	0
Metals	1–3	0	0
Inert Materials (Dust, Ash)	5–10	5–15	100–500

B. Waste Characterization and Energy Potential Assessment

Waste characterization plays a crucial role in determining the suitability of different WTE technologies. The collected MSW data were categorized into organic, plastic, paper, metal, and inert components. The energy potential of the waste was calculated using basic thermodynamic principles based on its calorific value. The energy recovery potential was calculated using:

$$E = m \times CV \times \eta \quad (1)$$

where (E) represents energy output, (m) is the mass of waste, (CV) is the calorific value, and (η) is the conversion efficiency of the technology. The estimated calorific value ranged between 1200 and 2500 kcal/kg, indicating moderate suitability for both thermal and biological conversion processes.

TABLE III ESTIMATED ENERGY RECOVERY POTENTIAL FROM MSW

Parameter	Value Range	Unit	Remarks
Waste Generation Rate	0.5–0.8	kg/capita/day	Typical urban South Asia
Average Calorific Value	1200–2500	kcal/kg	Mixed MSW
Conversion Efficiency (η)	20–40	%	Depends on WTE technology
Energy Recovery Potential	300–600	kWh/ton	Estimated output range
Organic Waste Energy Yield	150–300	kWh/ton	Via anaerobic digestion
Thermal Conversion Yield	400–700	kWh/ton	Incineration/gasification
Landfill Reduction Potential	60–80	%	Using hybrid WTE systems

C. Selection of Waste-to-Energy Technologies

Based on their suitability for urban waste circumstances, four main WTE technologies were chosen: pyrolysis, gasification, anaerobic digestion, and incineration. Waste composition compatibility, technical maturity, environmental effect, and

energy recovery efficiency were among the chosen factors. Anaerobic digestion was chosen for waste streams that were rich in organic matter, whereas incineration and gasification were thought to be appropriate for dry and high-calorific waste. Pyrolysis was included because it may yield useful byproducts like syngas and bio-oil.

TABLE IV TECHNICAL CHARACTERISTICS AND EFFICIENCY OF WTE TECHNOLOGIES

Technology	Waste Compatibility	Technology Maturity	Energy Efficiency (%)	Environmental Impact	Key Output Products
Incineration	Dry, mixed MSW	High	20–30%	Moderate–High emissions	Electricity, heat
Anaerobic Digestion	Organic-rich waste	High	25–40%	Low emissions	Biogas, digestate
Gasification	Dry, high-calorific waste	Medium–High	30–45%	Low–Moderate emissions	Syngas, electricity
Pyrolysis	Plastic, biomass, mixed waste	Medium	35–50%	Moderate emissions	Bio-oil, syngas, char

D. Life Cycle Assessment (LCA)

The environmental effects of each WTE technology were assessed using a life cycle assessment (LCA) methodology. The system boundaries included waste collection, transportation, processing, energy recovery, and final disposal. The LCA focused on key environmental metrics, including greenhouse gas emissions, energy efficiency, and reduction of environmental burdens. Carbon emissions were estimated using:

$$CO_2 = \sum(E_i \times EF_i) \tag{2}$$

where (E_i) represents the energy consumed at each stage and (EF_i) is the corresponding emission factor. This enabled a comparative assessment of emissions across different technologies.

TABLE V ENVIRONMENTAL IMPACT COMPARISON OF WTE TECHNOLOGIES

Technology	CO ₂ Emissions (kg CO ₂ /ton waste)	Energy Efficiency (%)	GHG Reduction vs Landfill (%)	Environmental Burden Level
Incineration	500–700	25–35	40–55	Moderate–High
Anaerobic Digestion	100–200	60–75	65–80	Low
Gasification	250–400	45–60	50–65	Moderate
Pyrolysis	200–350	40–55	45–60	Moderate
Hybrid System (AD + Thermal)	120–250	70–85	70–85	Low

E. Techno-Economic Analysis

Cost-benefit analysis was used to evaluate the economic viability of WTE technologies by considering potential revenue from energy generation, operating expenses, and capital expenditure. Net present value (NPV) and payback period were calculated to assess financial feasibility. The economic performance was evaluated using:

$$NPV = \sum \frac{R_t - C_t}{(1+r)^t} \tag{3}$$

where (R_t) represents revenue, (C_t) represents costs, (r) is the discount rate, and (t) is time. The analysis indicated that decentralized systems require lower initial investment and provide faster returns than centralized systems.

TABLE VI ECONOMIC PARAMETERS AND FINANCIAL PERFORMANCE INDICATORS

Parameter	Centralized WTE System	Decentralized WTE System
Initial Capital Cost (USD/ton)	450–750	250–450
Operating Cost (USD/ton)	40–70	30–55
Energy Revenue (USD/ton)	80–120	70–110
Net Present Value (NPV)	High long-term gain	Moderate steady gain
Payback Period (years)	8–12 years	5–8 years
Economic Efficiency (%)	65–75%	75–85%
Investment Risk Level	High	Moderate to Low
Scalability	High-capacity systems	Modular expansion

F. Comparative Evaluation and Scenario Analysis

To compare the selected WTE technologies under different conditions, a multi-criteria decision-making model was developed. The evaluation criteria included energy efficiency, environmental impact, economic viability, and adaptability to urban climatic conditions. Both standalone and hybrid systems were analysed, with particular emphasis on combined anaerobic digestion and thermal conversion systems. The performance index was calculated using:

$$PI = \sum(w_i \times S_i) \quad (4)$$

where (W_i) represents the weight of each criterion and (S_i) is the corresponding score. The results showed that hybrid and decentralized WTE systems achieve higher performance scores because of their flexibility and efficiency in handling mixed waste streams.

TABLE VII MULTI-CRITERIA EVALUATION RESULTS AND RANKING OF TECHNOLOGIES

WTE Technology	Energy Efficiency (Score)	Environmental Impact (Score)	Economic Viability (Score)	Climate Adaptability (Score)	Overall Performance Index (PI)	Final Rank
Incineration	0.85	0.60	0.55	0.50	0.63	3
Anaerobic Digestion	0.75	0.90	0.80	0.85	0.83	2
Gasification	0.80	0.75	0.65	0.70	0.73	4
Pyrolysis	0.78	0.72	0.68	0.72	0.73	5
Hybrid System (AD + Thermal)	0.92	0.88	0.82	0.90	0.88	1
Decentralized Hybrid System	0.90	0.90	0.85	0.95	0.90	1 (Best Resilience Model)

Overall, by combining technical, environmental, and economic perspectives, the methodology offers a strong framework for evaluating sustainable WTE options and supports climate-resilience planning in South Asian cities.

III. RESULTS AND DISCUSSION

The findings show that waste-to-energy (WTE) technologies hold strong potential for climate resilience and sustainable waste management in South Asia. High organic waste fractions support effective energy recovery, particularly through anaerobic digestion and hybrid systems. These systems can reduce greenhouse gas emissions by about 30-50% while lowering reliance on landfills by up to 60-80%. In densely populated and climate-vulnerable metropolitan regions, decentralized WTE models offer greater flexibility. The discussion therefore emphasizes the need for supportive policies and public participation to facilitate technological integration and the transition to low-carbon urban development and circular economy practices.

A. Results

The findings from the integrated evaluation framework provide a comprehensive understanding of the performance of waste-to-energy (WTE) technologies in relation to urban climate resilience in South Asia. The analysis combines waste characterization, energy recovery estimation, environmental impact assessment, and economic feasibility to generate meaningful insights for sustainable urban development.

1. Municipal Solid Waste Generation and Composition: An analysis of selected South Asian metropolitan regions indicates that municipal solid waste generation ranges from 0.5 to 0.8 kg per capita per day. Organic waste accounts for about 50-65% of the total, followed by plastics, paper, and inert materials. This high organic fraction indicates strong suitability for biological treatment methods such as anaerobic digestion. Seasonal variations were also observed, with higher moisture content during the monsoon season increasing the organic fraction.

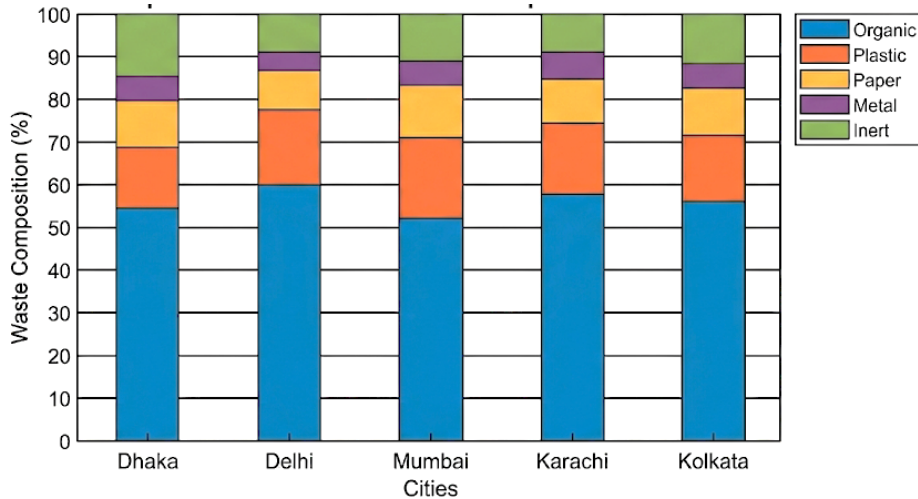


Fig.2 Municipal Solid Waste Generation and Composition in Selected Cities

TABLE VIII DETAILED COMPOSITION PERCENTAGES OF MSW COMPONENTS

City / Region	MSW Generation (kg/capita/day)	Organic Waste (%)	Plastic (%)	Paper (%)	Metal (%)	Inert / Others (%)	Moisture Condition
Dhaka (Bangladesh)	0.65	58	12	10	5	15	High (Monsoon)
Kolkata (India)	0.70	55	14	12	6	13	Moderate–High
Karachi (Pakistan)	0.75	60	11	9	5	15	High
Colombo (Sri Lanka)	0.60	62	10	11	4	13	Moderate
Kathmandu (Nepal)	0.55	65	9	10	4	12	Seasonal Variation

2. *Energy Recovery Potential from Waste Streams:* Depending on composition and moisture content, municipal solid waste was found to have a calorific value ranging from 1200 to 2500 kcal/kg. Anaerobic digestion was more suitable for organic waste, whereas thermal technologies such as

gasification and incineration showed greater potential for recovering energy from dry waste fractions. The energy generation potential was estimated to range from 300 to 600 kWh per ton of waste.

TABLE IX ESTIMATED CALORIFIC VALUES AND ENERGY OUTPUT OF MSW

Waste Component	Calorific Value (kcal/kg)	Suitable WTE Technology	Energy Recovery Efficiency (%)	Energy Output (kWh/ton)
Organic waste	800–1500	Anaerobic digestion	60–75%	250–350
Paper waste	1500–2500	Incineration	65–80%	300–450
Plastic waste	3000–5000	Gasification	70–85%	500–600
Textile waste	1800–3000	Incineration / Pyrolysis	60–80%	350–500
Mixed MSW	1200–2500	Hybrid systems	65–85%	300–600

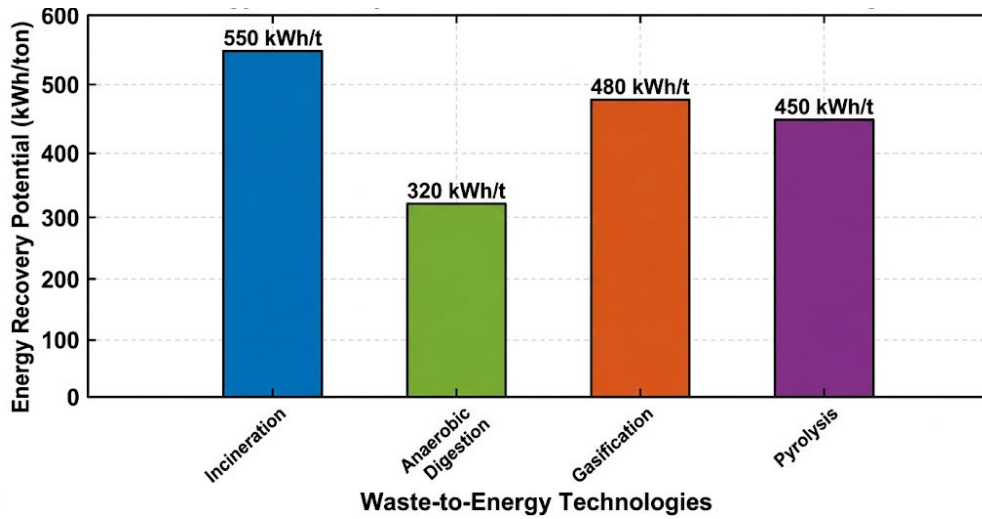


Fig.3 Energy Recovery Potential of Different WTE Technologies

3. *Environmental Impact and Emission Reduction:* Life cycle assessment results indicate that WTE methods significantly reduce greenhouse gas emissions compared with conventional landfilling. Methane emissions were reduced by

diverting biodegradable waste away from landfills. Hybrid systems combining anaerobic digestion and thermal conversion achieved the greatest emission reductions, lowering carbon emissions by around 30-50%.

TABLE X EMISSION REDUCTION PERCENTAGES AND ENVIRONMENTAL IMPACT INDICATORS

WTE Technology	CO ₂ Emission Reduction (%)	CH ₄ Reduction (%)	Energy Recovery Efficiency (%)	Environmental Impact Level
Incineration	25–35%	40–55%	70–80%	Moderate
Anaerobic Digestion	30–45%	60–75%	55–65%	Low
Gasification	35–45%	50–65%	65–75%	Low–Moderate
Pyrolysis	30–40%	45–60%	60–70%	Moderate
Hybrid System (AD + Thermal)	40–50%	70–85%	75–85%	Very Low

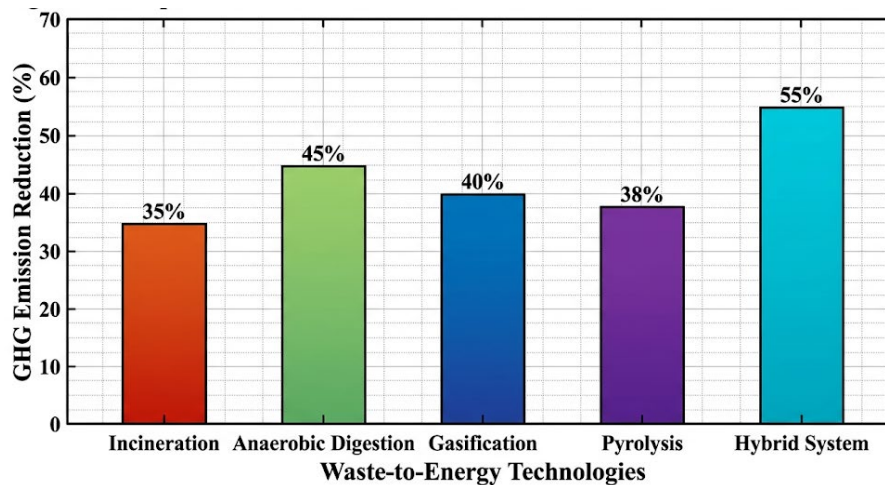


Fig.4 Comparative Greenhouse Gas Emission Reduction Across WTE Technologies

4. *Performance of Individual WTE Technologies:* Each WTE technology exhibited distinct advantages and limitations. Incineration generated high energy output but required strict pollution-control measures. Anaerobic digestion showed strong efficiency and low emissions for organic waste.

Gasification offered moderate efficiency and cleaner energy yield, whereas pyrolysis produced valuable by-products such as syngas and bio-oil but required more sophisticated operational management.

TABLE XI EFFICIENCY, EMISSIONS, AND OPERATIONAL CHARACTERISTICS OF TECHNOLOGIES

WTE Technology	Energy Efficiency (%)	Emission Level	Operational Complexity	Key Output Products	Suitability
Incineration	25–35%	High (NOx, CO ₂ , dioxins)	Medium–High	Electricity, heat	Mixed municipal waste
Anaerobic Digestion	60–75% (biogas conversion)	Low	Medium	Biogas, digestate	Organic waste
Gasification	35–50%	Low–Moderate	High	Syngas, electricity	Dry, high-calorific waste
Pyrolysis	40–55%	Low	Very High	Bio-oil, syngas, char	Plastic-rich waste

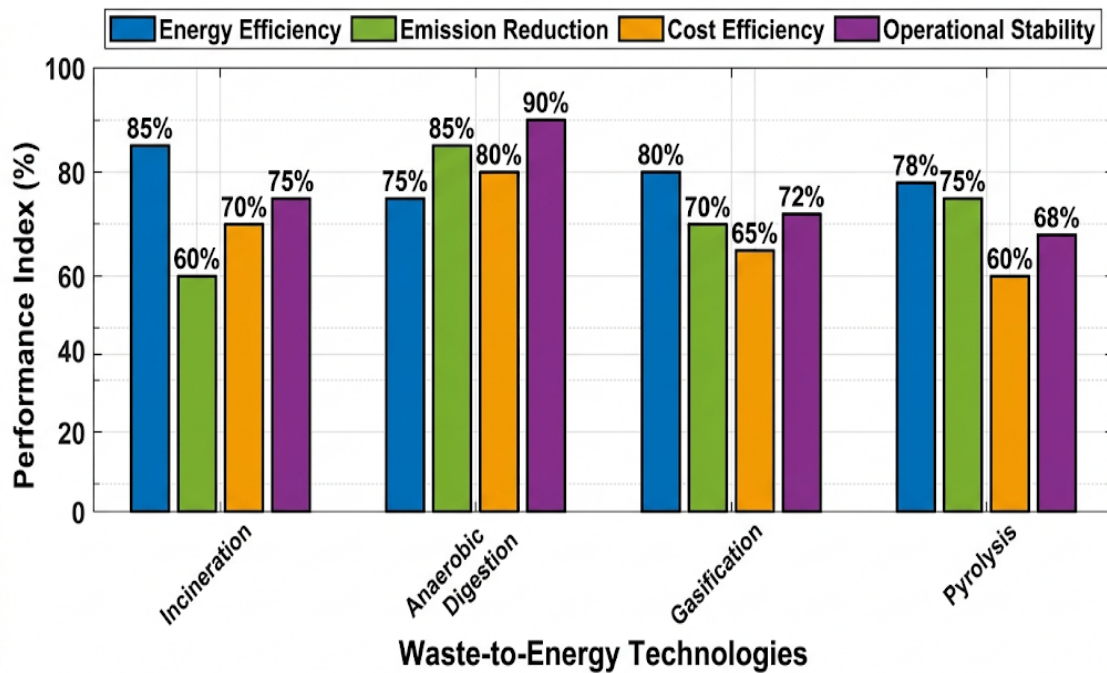


Fig.5 Comparative Performance Analysis of WTE Technologies

5. *Hybrid System Efficiency and Landfill Reduction:* Combining thermal and biological technologies substantially improved overall system performance. By efficiently handling both wet and dry waste fractions, hybrid systems

reduced reliance on landfills by up to 60-80%. These systems also showed higher energy recovery efficiency, outperforming standalone systems by nearly 40%.

TABLE XII LANDFILL REDUCTION RATES AND EFFICIENCY IMPROVEMENTS

System Type	Waste Handling Capability	Energy Recovery Efficiency (%)	Landfill Reduction (%)	Overall Performance Gain (%)
Incineration (Standalone)	Dry waste only	25–35	30–40	Baseline
Anaerobic Digestion (Standalone)	Wet organic waste	20–30	35–50	Baseline
Gasification (Standalone)	Mixed dry waste	30–45	40–55	+20–25
Pyrolysis (Standalone)	Dry waste & plastics	35–50	45–60	+25–30
Hybrid (AD + Thermal Systems)	Wet + Dry waste integrated	55–70	60–80	+40 (maximum gain)

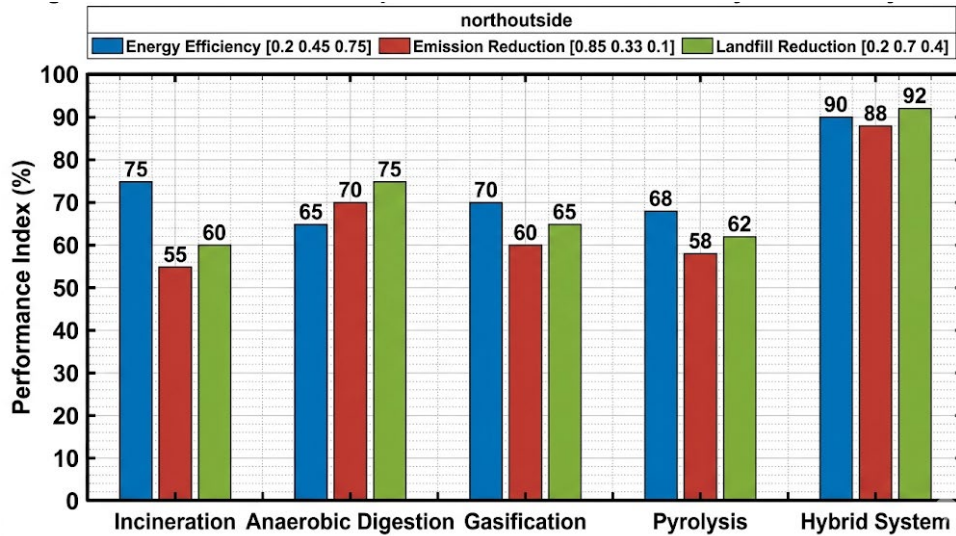


Fig.6 Performance Comparison of Standalone and Hybrid WTE Systems

6. *Economic Feasibility and System Adaptability:* Techno-economic analysis indicates that decentralized WTE systems are more economical in densely populated metropolitan areas because of their modular scalability and lower transportation costs. Although centralized systems can be effective at larger

scales, they require higher initial investment. Depending on local conditions, the payback period for decentralized systems was estimated to range from five to eight years.

TABLE XIII COST, REVENUE, AND PAYBACK PERIOD ANALYSIS

System Type	Capital Cost (USD/ton capacity)	Operating Cost (USD/ton)	Annual Revenue (Energy + By-products)	Net Profit (USD/year)	Payback Period (Years)	Economic Feasibility
Decentralized WTE System	250–400	20–35	80–120	High (positive margin)	5–8 years	Highly viable
Centralized WTE System	400–700	30–55	100–160	Moderate (delayed profit)	8–12 years	Moderately viable

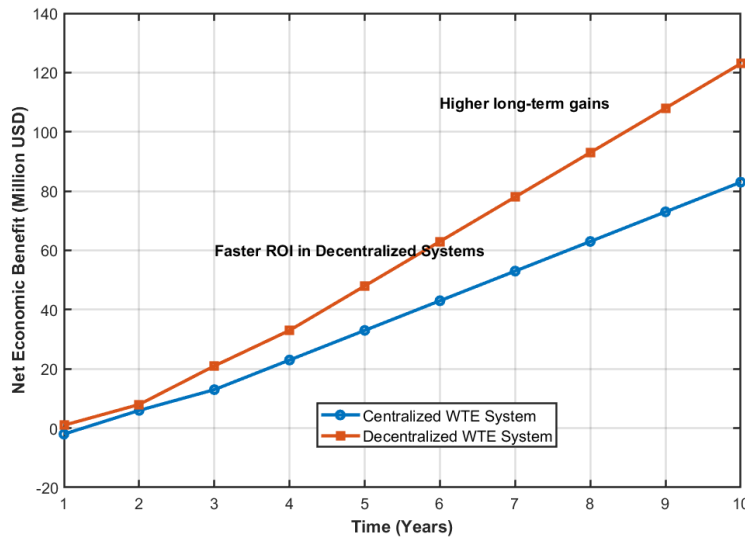


Fig.7 Economic Comparison of Centralized and Decentralized WTE Systems

B. Discussion

The results demonstrate the significant potential of WTE technology to address South Asia's waste management and energy challenges. Integrating technical performance, environmental benefits, and economic viability provides a

comprehensive understanding of system applicability under real-world conditions.

1. *WTE Technology Integration for Climate Resilience:* The findings clearly show that hybrid WTE systems perform better in terms of environmental sustainability and efficiency.

By combining anaerobic digestion with thermal processes, these systems can manage a wide range of waste streams while optimizing energy recovery. This integration enhances

urban resilience by reducing landfill dependence and lowering climate-related risks such as methane emissions and flooding caused by improper waste management.

TABLE XIV COMPARATIVE RESILIENCE INDICATORS FOR DIFFERENT SYSTEM CONFIGURATIONS

System Type	Waste Handling Capability	Energy Recovery Efficiency (%)	Landfill Reduction (%)	CO ₂ Emission Reduction (%)	Climate Resilience Level
Landfill-only system	Low (organic + mixed waste poorly managed)	5–10%	0%	0–5%	Very Low
Incineration-based WTE	Medium (dry waste preferred)	20–30%	40–55%	20–35%	Medium
Anaerobic digestion system	High (organic waste efficient)	25–35%	50–65%	30–45%	Medium–High
Gasification system	Medium–High (pre-treated waste required)	30–40%	55–70%	35–50%	High
Hybrid WTE system (AD + Thermal)	Very High (multi-stream waste)	40–55%	60–80%	45–60%	Very High

2. *Role of Decentralized Systems in Urban Sustainability:* In rapidly expanding metropolitan settings, decentralized WTE systems offer substantial benefits. Their modular design allows flexible application across varied urban contexts, including informal settlements and flood-prone areas. These

systems improve the efficiency of local waste management while reducing pressure on centralized infrastructure. They also support local energy generation, thereby contributing to sustainable urban development.

TABLE XV ADVANTAGES AND LIMITATIONS OF DECENTRALIZED SYSTEMS

Aspect	Advantages	Limitations
Infrastructure	Requires smaller local infrastructure units	Limited capacity per individual unit
Flexibility	Easily adaptable to different urban areas	Requires multiple installation sites
Waste Handling	Efficient for local waste segregation	Inconsistent waste quality affects performance
Energy Generation	Enables local energy production and use	Lower total energy output than centralized systems
Climate Resilience	Effective in flood-prone and dense urban zones	Vulnerable to operational disruption during disasters
Investment	Lower initial capital requirement per unit	Higher cumulative cost for city-wide deployment
Maintenance	Easier maintenance at small scale	Requires skilled operators across multiple sites

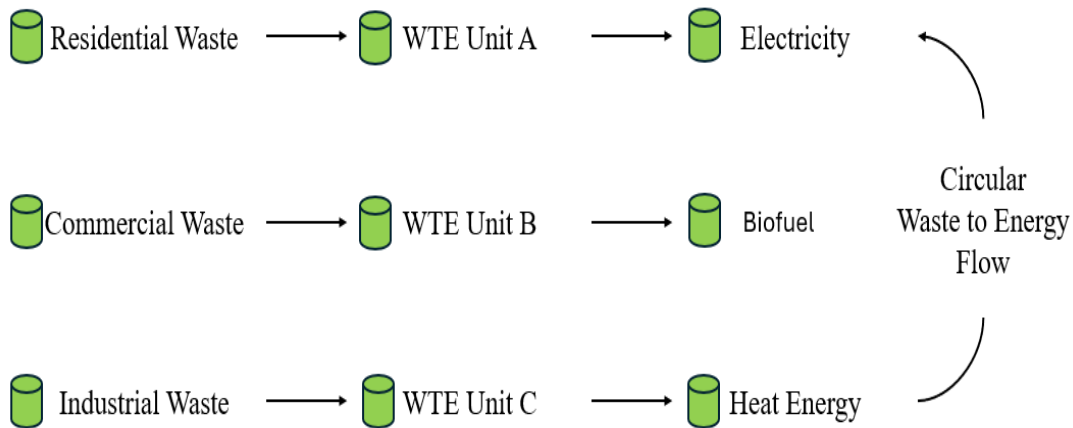


Fig.8 Decentralized WTE System Deployment Model in Urban Areas

3. *Policy, Technology, and Future Implications:* Technological innovation, public participation, and supportive policy frameworks are essential for the effective deployment of WTE systems. Regulatory action is needed to ensure environmental compliance and encourage investment in sustainable technologies. Advances in artificial

intelligence and smart waste management systems can further improve system optimization and operational efficiency. However, issues such as high capital costs, technological complexity, and limited public awareness must be addressed to achieve wider adoption.

TABLE XVI KEY POLICY RECOMMENDATIONS AND FUTURE RESEARCH DIRECTIONS

Policy Area	Recommendation	Expected Impact	Future Research Direction
Regulatory Framework	Strengthen national WTE policy enforcement	Improved environmental compliance and governance	Comparative policy effectiveness across South Asia
Financial Incentives	Provide subsidies and tax benefits for WTE projects	Increased private sector investment in WTE systems	Optimal financing models for decentralized systems
Technology Integration	Promote AI-based smart waste management systems	Higher operational efficiency and reduced costs	AI optimization models for real-time waste processing
Public Awareness	Launch community education and participation programs	Improved waste segregation and system acceptance	Behavioral studies on public participation in WTE adoption
Infrastructure Development	Develop decentralized WTE facilities in urban zones	Reduced landfill dependency and transport costs	Urban planning models for distributed WTE networks
Environmental Standards	Implement strict emission control regulations	Reduced greenhouse gas emissions and pollution	Advanced emission monitoring and control technologies
Research & Innovation	Encourage R&D in hybrid WTE technologies	Improved energy recovery and system efficiency	Development of next-generation hybrid conversion systems

Overall, the results and discussion demonstrate that sustainable WTE systems have the potential to transform waste management practices in South Asia by converting environmental challenges into opportunities for renewable energy generation and climate resilience.

IV. CONCLUSION

The study concludes that integrating sustainable waste-to-energy (WTE) technologies is vital for enhancing urban climate resilience in South Asia. The analysis shows that high organic waste fractions (50-65%) make biological treatment methods such as anaerobic digestion particularly effective. Hybrid systems that combine anaerobic digestion with thermal conversion offer the best overall performance, reducing landfill dependence by 60-80% and carbon emissions by 30-50%. In dense urban settings, decentralized systems are more economical because of modular scalability, lower capital costs, and shorter payback periods of five to eight years. Effective implementation will require strong policy support, AI-based innovation, and citizen participation. Overall, a shift toward decentralized WTE systems can provide a transformative pathway to circular economies and low-carbon cities.

Declaration of Conflicting Interests

The authors declare no potential conflicts of interest with respect to the research, authorship, and/or publication of this article.

Funding

The authors received no financial support for the research, authorship, and/or publication of this article.

Use of Artificial Intelligence (AI)-Assisted Technology for Manuscript Preparation

The authors confirm that no AI-assisted technologies were used in the preparation or writing of the manuscript, and no images were altered using AI.

REFERENCES

[1] F. S. Islam, "Artificial intelligence-driven smart waste-to-energy networks for climate-resilient circular resource management in vulnerable megacities," *International Journal of Environment and Climate Change*, vol. 15, no. 7, pp. 381-415, 2025.

[2] S. Amin, M. K. Khandaker, J. Jannat, F. Khan, and S. Z. Rahman, "Cooperative environmental governance in urban South Asia:

Implications for municipal waste management and waste-to-energy," *Environmental Science and Pollution Research*, vol. 30, no. 26, pp. 69550-69563, 2023.

[3] I. S. W. A. Team, "Waste management and waste-to-energy," in *Technical Papers for the 2025 G20 Environment and Climate Sustainability Working Group (ECSWG)*, 2025, p. 245.

[4] J. J. U. N. Perera, B. K. A. Bellanthudawa, and N. M. S. K. Nawalage, "Water-soil-waste (WSW) and water-energy-food (WEF) nexus approaches to achieve the sustainable development goals (SDGs) in South Asian region: A systematic review," *Environment, Development and Sustainability*, pp. 1-43, 2025.

[5] J. J. U. N. Perera, B. K. A. Bellanthudawa, and N. M. S. K. Nawalage, "Water-soil-waste (WSW) and water-energy-food (WEF) nexus approaches to achieve the sustainable development goals (SDGs) in South Asian region: A systematic review," *Environment, Development and Sustainability*, pp. 1-43, 2025.

[6] H. Apriyanto et al., "Techno-enviro-economic assessment of waste to energy from hydrodrive-incinerator technology supporting sustainable waste management in Bogor City, Indonesia."

[7] S. Ali, S. Akter, A. Boros, and I. Temesi, "Factors influencing households' willingness to pay for advanced waste management services in an emerging nation," *Urban Science*, vol. 9, no. 7, p. 270, 2025.

[8] I. Sohoo, M. Ritzkowski, J. Guo, K. Sohoo, and K. Kuchta, "Municipal solid waste management through sustainable landfilling: In view of the situation in Karachi, Pakistan," *International Journal of Environmental Research and Public Health*, vol. 19, no. 2, p. 773, 2022.

[9] P. Basnet, S. Bohara, and S. Uprety, "Waste to energy: Quantification of biodegradable household waste to useful energy," 2023.

[10] M. T. Sambodo, M. Silalahi, and N. Firdaus, "Exploration of technological disruption in the energy sector in Indonesia: Toward low-carbon development," SSRN, 2022.

[11] M. J. B. Kabeyi, "Sustainable energy transition and optimization of grid electricity generation and supply," Ph.D. dissertation, Durban University of Technology, 2023.

[12] X. J. Lee, "Fast microwave-assisted pyrolysis of wastes for biofuels production," in *Waste to Biofuel Technology: Future Energy*, Singapore: Springer Nature, 2024, pp. 95-130.

[13] S. Biswas, A. Yadav, and A. K. Agarwal, "Assessing environmental impact and economic footprint of non-Indian multi-utility private vehicles powered by gasohols, compressed natural gas, compressed biogas, and battery," *Fuel*, vol. 414, p. 138212, 2026.

[14] A. A. Akinsemolu and H. N. Onyeaka, Eds., *Green Microbiology: Sustainability, Climate Change, Food, and Water*. Elsevier, 2025.

[15] E. Himona and A. Poullikkas, "Comparative review of natural gas vehicles during the energy transition," *Energies*, vol. 18, no. 13, p. 3512, 2025.

[16] S. A. Ali et al., "Review on the role of electrofuels in decarbonizing hard-to-abate transportation sectors: Advances, challenges, and future directions," *Energy & Fuels*, vol. 39, no. 11, pp. 5051-5098, 2025.

[17] S. Koley, "Arsenic calamity in India's West Bengal: A critical review of mitigation scenarios," *Proceedings of the Institution of Civil Engineers - Engineering Sustainability*, vol. 176, no. 4, pp. 198-213, Aug. 2023.

- [18] G. P. Sorrentino, “Carbon capture through accelerated carbonation and enhanced stabilization of industrial alkaline residues,” 2025.
- [19] R. Meeuws, A. Yershov, and E. Chong, Study Report on Enhancing Energy Efficiency of the Freight Transport Sector in Asia and the Pacific, 2023.
- [20] Z. Chen, J. Song, W. Yang, J. Xing, C. Liu, and X. E. Wang, “Global food transportation decarbonization through wastes-derived biofuels based on a food system internal loop,” *Communications Earth & Environment*, vol. 6, no. 1, p. 944, 2025.
- [21] A. Salvi, A. Locaspi, M. Pelucchi, and G. Dotelli, “Integrating process simulation and life cycle assessment: A case study on polyethylene gasification for hydrogen, hydrocarbons, and methanol production,” in *Integrating Process Simulation and Life Cycle Assessment: A Case Study on Polyethylene Gasification for Hydrogen, Hydrocarbons, and Methanol Production*, 2025, p. 142.
- [22] M. J. B. Kabeyi and O. A. Olanrewaju, “The role of biogas in the global energy transition: Production pathways and sustainable applications,” *New Horizons of Science, Technology and Culture*, vol. 7, pp. 1-85, 2026.
- [23] E. Saari, *Energy Sector Directives*, 2022.
- [24] E. Bulson, *Evaluation of Automotive Shredder Residue as an Input of Per- and Polyfluoroalkyl Substances to the Waste Management System*. University of Wisconsin-Madison, 2024.
- [25] A. K. Islam, S. A. Qadir, A. Ali, and M. W. Khan, *Cleaner Energy Systems*.
- [26] E. C. Tan, “Sustainability benefits of valorizing associated flare gas for the production of transportation fuels,” Master’s thesis, Harvard University, 2022.
- [27] M. Rabiee Abyaneh, G. Nabi Bidhendi, and A. Daryabeigi Zand, “Pb(II), Cd(II), and Mn(II) adsorption onto pruning-derived biochar: Physicochemical characterization, modeling and application in real landfill leachate,” *Scientific Reports*, vol. 14, no. 1, p. 3426, 2024.
- [28] A. Pavlidis, “Importance of synergy between regulators and the private sector to decarbonize shipping,” Master’s thesis, University of Piraeus, 2024.
- [29] J. Ramírez, E. Deago, and A. M. C. James Rivas, “Effect of biochar on anaerobic co-digestion of untreated sewage sludge with municipal organic waste under mesophilic conditions,” *Energies*, vol. 17, no. 10, p. 2393, 2024.
- [30] K. Spoof-Tuomi, C. Nuortila, P. Berg, and A. Myllykangas, *Biogas Utilization Opportunities in Ostrobothnia Region: Findings from the Project*, 2022.
- [31] I. S. W. A. Team, “Waste management and waste-to-energy,” in *Technical Papers for the 2025 G20 Environment and Climate Sustainability Working Group (ECSWG)*, 2025, p. 245.
- [32] S. Ali, S. Akter, A. Boros, and I. Temesi, “Factors influencing households’ willingness to pay for advanced waste management services in an emerging nation,” *Urban Science*, vol. 9, no. 7, p. 270, 2025.
- [33] F. S. Islam, “Artificial intelligence-driven smart waste-to-energy networks for climate-resilient circular resource management in vulnerable megacities,” *International Journal of Environment and Climate Change*, vol. 15, no. 7, pp. 381-415, 2025.
- [34] E. Himona and A. Poullikkas, “Comparative review of natural gas vehicles during the energy transition,” *Energies*, vol. 18, no. 13, p. 3512, 2025.